

ALUMINUM COMPATIBLE LASER WELDABLE 50 OHM FEEDTHROUGH SMP ADAPTABLE, .015 DIAMETER CENTER CONTACT

REVISIONS			
REV	CHANGE NO.	DATE	CFG APPROVAL
-	INIT RLSE	2007-01-05	J. PETRI
A	DCN000460	3/24/2009	J. PETRI

- CONFIGURATION FOR INTERFACING TO SMP "BULLET" STYLE ADAPTER
- DESIGNED TO LASER WELD INTO AN ELECTRONIC CHASSIS WALL
- INDUSTRY STANDARD NICKEL-IRON-COBALT ALLOY CONTACT WITH CORNING 7070 EQUIVALENT GLASS
- INTEGRAL RF GROUNDING TAB FOR EXCELLENT PERFORMANCE OVER TEMPERATURE

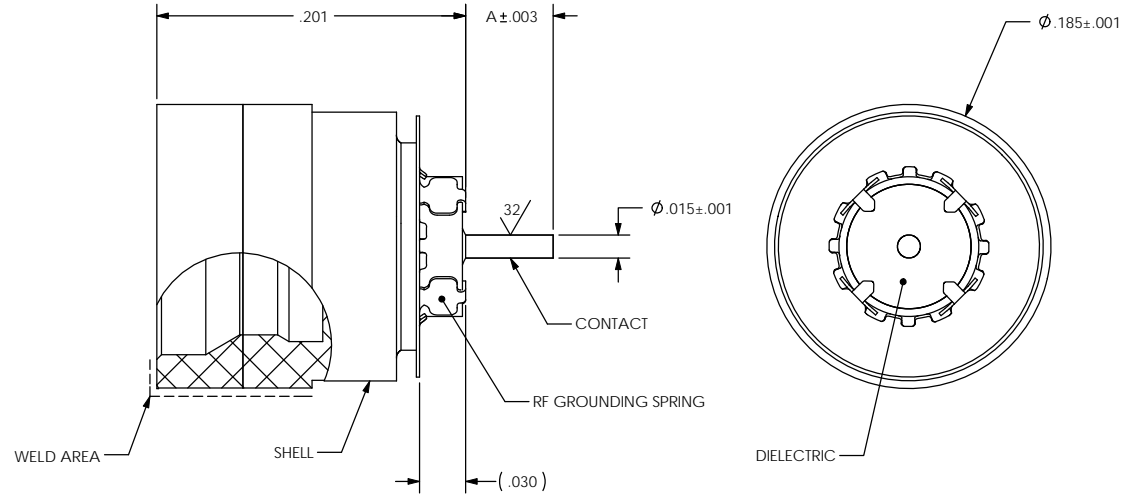
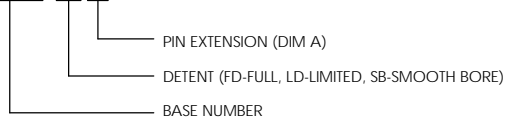
1. LEAK RATE: LESS THAN OR EQUAL TO 1X10E-9 CC/SEC He AT ONE ATMOSPHERE DIFFERENTIAL PRESSURE.
2. NOMINAL IMPEDANCE: 50 OHMS
3. INTERFACE IN ACCORDANCE WITH MIL-STD-348, SMP.

4. MATERIALS:
 CONTACT: NICKEL-IRON-COBALT ALLOY IN ACCORDANCE WITH ASTM F15.
 DIELECTRIC: CORNING 7070 EQUIVALENT GLASS (MATCHED SEAL).
 SHELL (WELD AREA): ALUMINUM ALLOY 4047 IN ACCORDANCE WITH AWS A5.8.
 RF GROUNDING SPRING: STAINLESS STEEL ALLOY 300-SERIES.

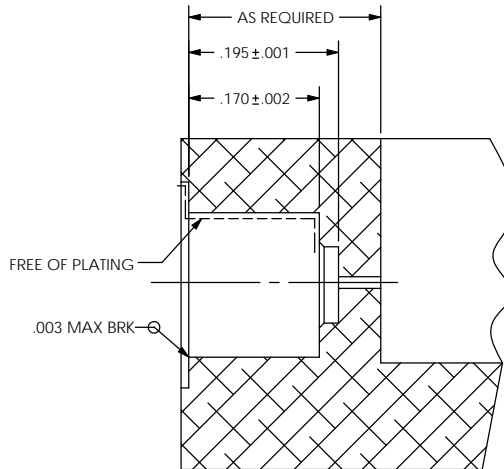
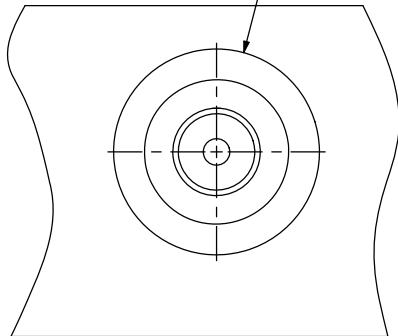
5. FINISH, CONTACT AND SHELL (EXCEPT WELD AREA):
 NICKEL PLATE PER QQ-N-290, CLASS 2, .000150/.000300 THICK.
 GOLD PLATE PER ASTM B488-01, TYPE III, CODE A, .000100/.000150 THICK.

7. ORDERING INSTRUCTIONS:
 SPECIFY BASE NUMBER FOLLOWED BY DASH NUMBERS INDICATING DETENT AND PIN EXTENSION.

EXAMPLE: SRIFT1001 - FD 050



- ∅ .0345 ± 0.001 THRU
- ∅ .0995 ± 0.0005 SHOWN
- ∅ .114 ± 0.006 X 90° ± 5°
- ∅ .188 ± 0.001 SHOWN
- ∅ .248 MIN AS REQUIRED



SUGGESTED HOLE DETAIL (NOT TO SCALE)

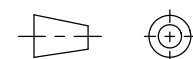
UNLESS OTHERWISE SPECIFIED
 DIMENSIONING IAW ASME Y14.5M-1994
 DIMENSIONS APPLY AFTER PROCESSES
 DIMENSIONS IAW US CUSTOMARY UNITS
 .X ± .1, .XX ± .01, .XXX ± .005, ∠ ± 5°
 .010 MAX OUTSIDE R, .005 MAX INSIDE R
 125 RMS SURFACE FINISH



(321) 254-4067
 WWW.SRIHERMETICS.COM

TITLE
 FEEDTHROUGH, ALUMINUM LASER WELDABLE SMP

THIRD ANGLE PROJECTION



SIZE A	DOCUMENT SRIFT1001	REV A
SCALE 8:1	CAGE CODE 3PJY7	SHEET 1 OF 1