

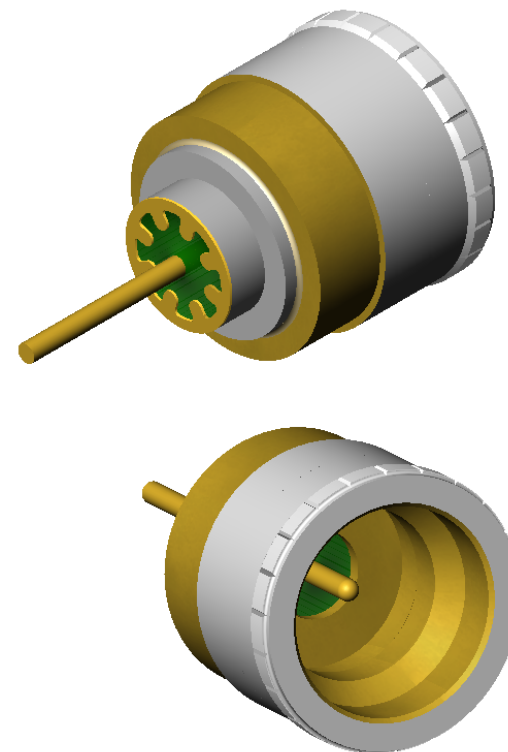
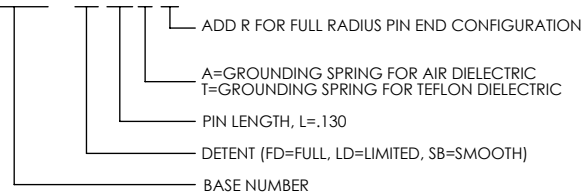
REVISIONS			
REV	DCN	REV DATE	RELEASE APPROVAL
-	INIT RLSE		

ALUMINUM COMPATIBLE LASER WELDABLE 50 OHM FEEDTHROUGH SMP ADAPTABLE, .015 DIAMETER CENTER CONTACT, PRESS-IN

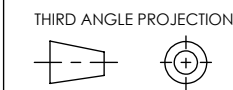
- CONFIGURATION FOR INTERFACING TO SMP "BULLET" STYLE ADAPTER
- DESIGNED TO LASER WELD INTO AN ELECTRONIC CHASSIS WALL
- INDUSTRY STANDARD NICKEL-IRON-COBALT ALLOY CONTACT WITH CORNING 7070 EQUIVALENT GLASS
- INTEGRAL RF GROUNDING TAB FOR EXCELLENT PERFORMANCE OVER TEMPERATURE
- DROP-IN HIGHER PERFORMANCE REPLACEMENT FOR SRIFT1001 STYLE CONNECTORS.

1. LEAK RATE: LESS THAN OR EQUAL TO 1X10E-9 CC/SEC H₂ AT ONE ATMOSPHERE DIFFERENTIAL PRESSURE.
2. NOMINAL IMPEDANCE: 50 OHMS
3. INTERFACE IN ACCORDANCE WITH MIL-STD-348, SMP.
4. MATERIALS:
 PIN: NICKEL-IRON-COBALT ALLOY IN ACCORDANCE WITH ASTM F15
 DIELECTRIC: CORNING 7070 EQUIVALENT GLASS (MATCHED SEAL)
 SHELL (WELD FLANGE): ALUMINUM ALLOY 4047 IN ACCORDANCE WITH AWS A5.8
 RF GROUNDING SPRING: BERYLLIUM-COPPER ALLOY 172/173 IN ACCORDANCE WITH ASTM B 194 (NICKEL AND GOLD PLATED)
5. FINISH, CONTACT AND SHELL (EXCEPT WELD FLANGE):
 NICKEL PLATE PER QQ-N-290, CLASS 2, .000100/.000250 THICK.
 GOLD PLATE PER ASTM B488-01, TYPE III, CODE A, .000050/.000150 THICK.
6. ORDERING INSTRUCTIONS:
 SPECIFY BASE NUMBER FOLLOWED BY DASH NUMBERS INDICATING DETENT TYPE, PIN LENGTH, AND DIELECTRIC APPLICATION.

EXAMPLE: SRIFT1021 - FD 130 A R

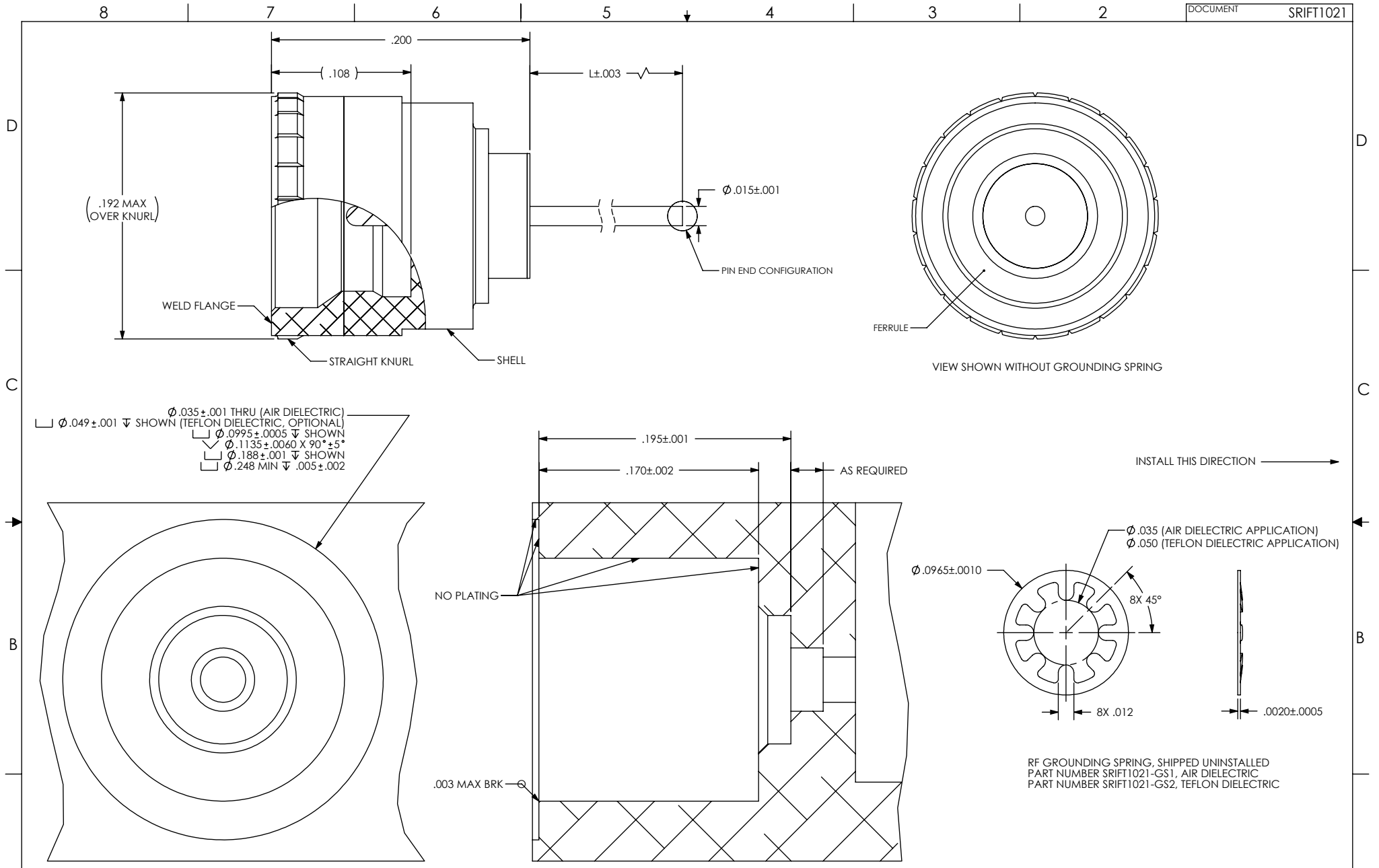


UNLESS OTHERWISE SPECIFIED
 DIMENSIONING IAW ASME Y14.5M-1994
 DIMENSIONS APPLY AFTER PROCESSES
 DIMENSIONS IAW US CUSTOMARY UNITS
 .X ±.1, .XX ±.01, .XXX ±.005, ∠ ±.5°
 .010 MAX OUTSIDE R, .005 MAX INSIDE R
 125 RMS SURFACE FINISH



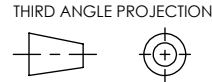
SRI HERMETICS (321) 254-4067
 WWW.SRIHERMETICS.COM

TITLE FEEDTHROUGH, SMP, AC LBW, PRESS-IN, CUSTOM			
SIZE A	DOCUMENT SRIFT1021	REV -	
SCALE 8:1	CAGE CODE 3PJY7	SHEET 1 OF 2	



SUGGESTED HOLE DETAIL

UNLESS OTHERWISE SPECIFIED
 DIMENSIONING IAW ASME Y14.5M-1994
 DIMENSIONS APPLY AFTER PROCESSES
 DIMENSIONS IAW US CUSTOMARY UNITS
 .X ± .1, .XX ± .01, .XXX ± .005, $\angle \pm .5^\circ$
 .010 MAX OUTSIDE R, .005 MAX INSIDE R
 125 RMS SURFACE FINISH



		(321) 254-4067		REV -
WWW.SRIHERMETICS.COM				
TITLE FEEDTHROUGH, SMP, AC LBW, PRESS-IN, CUSTOM				
SIZE A	DOCUMENT SRIFT1021			
SCALE 10:1	CAGE CODE 3PJY7	SHEET 1	2 OF 2	