

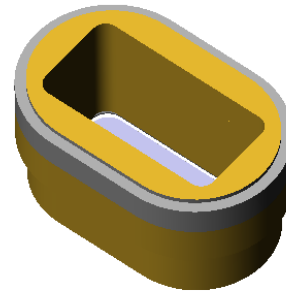
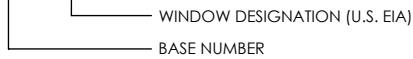
REVISIONS			
REV	CHANGE NO.	DATE	CFG APPROVAL
-	INIT RLSE	2/19/2010	J. PETRI

LASER WELDABLE WAVEGUIDE CONNECTOR

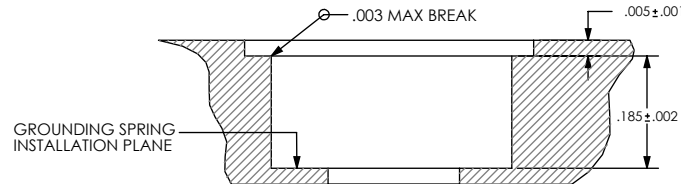
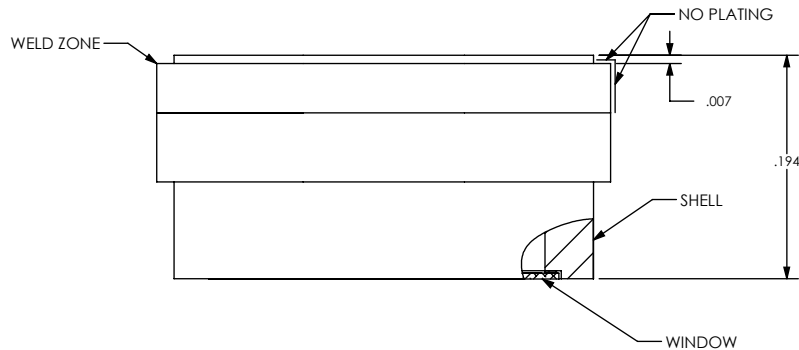
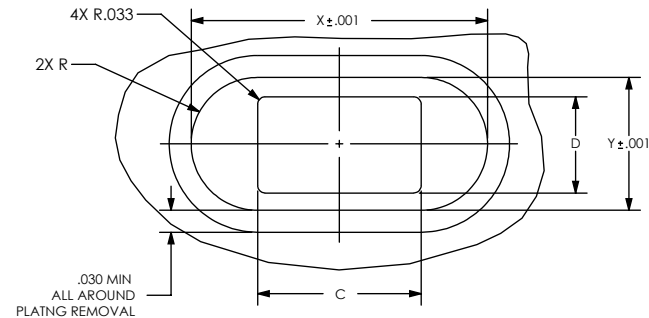
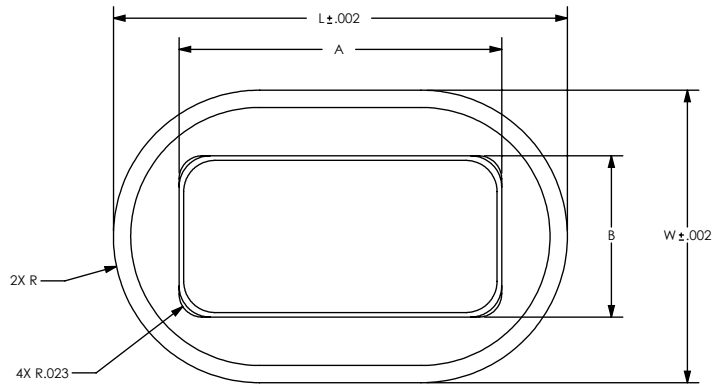
- INCORPORATES LOW LOSS ALUMINUM OXIDE WINDOW
- DESIGNED TO LASER WELD INTO AN ALUMINUM 4000 SERIES HOUSING

1. HERMETIC LEAK RATE: LESS THAN OR EQUAL TO 1X10E-9 CC/SEC He AT ONE ATMOSPHERE DIFFERENTIAL PRESSURE.
2. OPERATING TEMPERATURE RANGE: -55°C TO +125°C
3. MATERIALS:
SHELL (WELD ZONE): ALUMINUM ALLOY 4047
WINDOW: LOW LOSS ALUMINUM OXIDE (Al₂O₃)
4. FINISH (SHELL): GOLD OVER NICKEL
5. OPTIONAL GROUNDING SPRING AVAILABLE, FOR CONTINUOUS RF GROUND TO HOUSING
6. ORDERING INSTRUCTIONS:
SPECIFY BASE NUMBER FOLLOWED BY DASH NUMBERS INDICATING WINDOW SIZE:

EXAMPLE: SRIFT601-WR28



PART NUMBER	L	W	A	B	X	Y	C	D	OPTIONAL GROUND SPRING
SRIFT601-WR22	0.338	0.226	0.224	0.112	0.341	0.229	0.224	0.112	SRIC106-WR22
SRIFT601-WR28	0.394	0.254	0.280	0.140	0.397	0.257	.280	.140	SRIC106-WR28
SRIFT601-WR42	0.570	0.284	0.420	0.170	0.573	0.287	0.420	0.170	SRIC106-WR42



SUGGESTED HOLE DETAIL
(NOT TO SCALE)

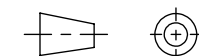
UNLESS OTHERWISE SPECIFIED
DIMENSIONING IAW ASME Y14.5M-1994
DIMENSIONS APPLY AFTER PROCESSES
DIMENSIONS IAW US CUSTOMARY UNITS
X ±.1, .XX ±.01, .XXX ±.005, ∠ ±.5°
.010 MAX OUTSIDE R, .005 MAX INSIDE R
125 RMS SURFACE FINISH



(321) 254-4067
WWW.SRIHERMETICS.COM

TITLE
CONNECTOR, WAVEGUIDE

THIRD ANGLE PROJECTION



SIZE A	DOCUMENT SRIFT601	REV -
SCALE 4:1	CAGE CODE 3PJY7	SHEET 1 OF 1