

SRIMD1001 MICRO-D CONNECTOR SERIES, REAR MOUNT, SST-COMPATIBLE

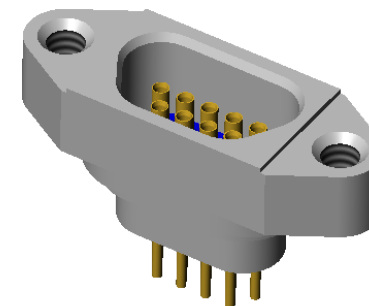
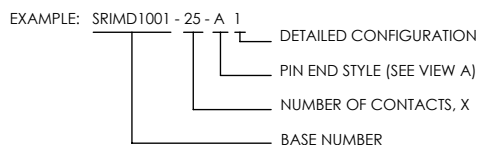
REVISIONS			
REV	CHANGE NO.	DATE	APPROVED
-	INIT RLSE	----	/S/ DC
A	DCN000011	11/1/2004	/S/ DC
B	DCN000028	12/13/2004	/S/ DC
C	DCN000470	4/9/2009	J. PETRI


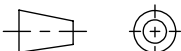
- WELD INTERFACE LOCATED AT THE REAR OF THE CONNECTOR
- DESIGNED TO LASER WELD ON THE VACUUM SIDE OF A DEWAR FLANGE
- CONFORMS TO MIL-PRF-83513 AND ARE AVAILABLE IN 9, 15, 21, 25, 31, 37, 51, AND 100 COUNT PIN/SOCKET CONFIGURATIONS.
- INCORPORATES BERYLLIUM-COPPER PIN/SOCKETS INDIVIDUALLY SEALED USING CERAMAX® PROPRIETARY CERAMIC TO ESTABLISH A DURABLE HERMETIC SEAL.
- THE INTERNAL CONTACTS ARE LAPPED FLAT FOR WIREBONDING TO THE CONTACT END

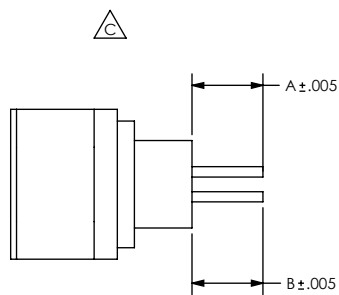
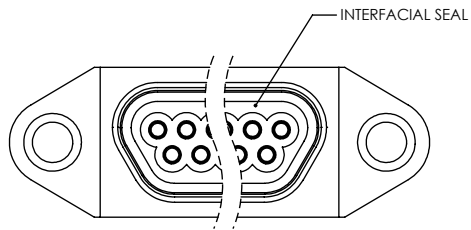
1. LEAK RATE: LESS THAN OR EQUAL TO 1X10E-9 CC/SEC He AT ONE ATMOSPHERE DIFFERENTIAL PRESSURE.
2. INTERFACE AND MOUNTING HOLES IN ACCORDANCE WITH MIL-PRF-83513/2.
3. MATERIALS:
 CONTACT: BERYLLIUM-COPPER ALLOY 172/173 IN ACCORDANCE WITH ASTM B196/197.
 INSULATOR: CERAMAX PROPRIETARY CERAMIC.
 SHELL: STAINLESS STEEL ALLOY 304L IN ACCORDANCE WITH QQ-S-763.
 INTERFACIAL SEAL: FLUOROSILICONE RUBBER PER MIL-R-25988, CLASS 1, TYPE II, GRADE 60.
4. FINISH:
 CONTACTS: NICKEL PLATE PER QQ-N-290, .000100/.000250 THICK.
 GOLD PLATE PER ASTM B488, TYPE III, CODE A, .000075/.000125 THICK.
 PLATE ENTIRE EXPOSED PIN, BOTH ENDS.
 PLATING IN SOCKETS NOT REQUIRED BENEATH BLEED HOLE.
 SHELL: PASSIVATED.



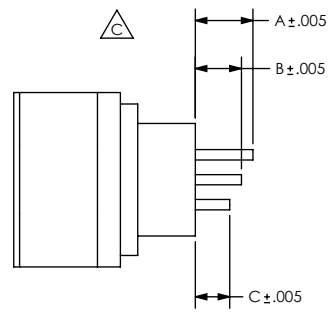
5. ORDERING INSTRUCTIONS:
 SPECIFY BASE NUMBER FOLLOWED BY DASH NUMBERS INDICATING PIN COUNT AND CONFIGURATION



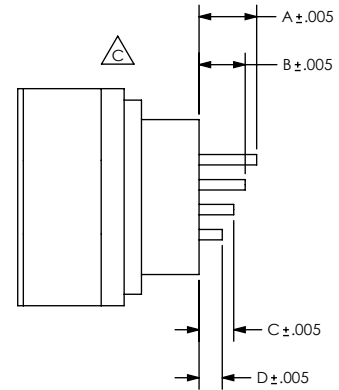
UNLESS OTHERWISE SPECIFIED DIMENSIONING IAW ASME Y14.5M-1994 DIMENSIONS APPLY AFTER PROCESSES DIMENSIONS IAW US CUSTOMARY UNITS .X ± .1, .XX ± .01, .XXX ± .005, ∠ ± .5° .010 MAX OUTSIDE R, .005 MAX INSIDE R 125 RMS SURFACE FINISH		 (321) 254-4067 WWW.SRIHERMETICS.COM	
THIRD ANGLE PROJECTION 		TITLE CONNECTOR, MICRO-D, REAR MOUNT, SST-COMPATIBLE	
SIZE A	DOCUMENT SRIMD1001	REV C	
SCALE 3:1	CAGE CODE 3PJY7	SHEET 1 OF 3	



9- THROUGH 37-PIN CONFIGURATIONS

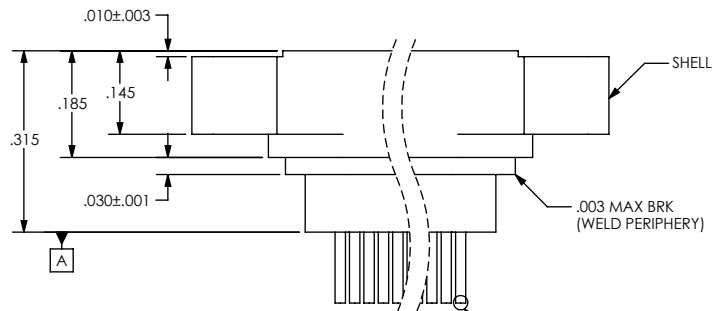


51-PIN CONFIGURATION



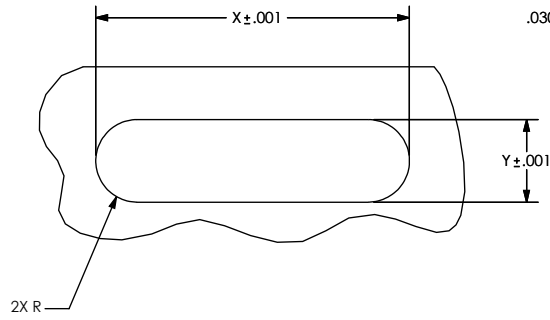
100-PIN CONFIGURATION

PIN EXTENSIONS (SEE SH 3)

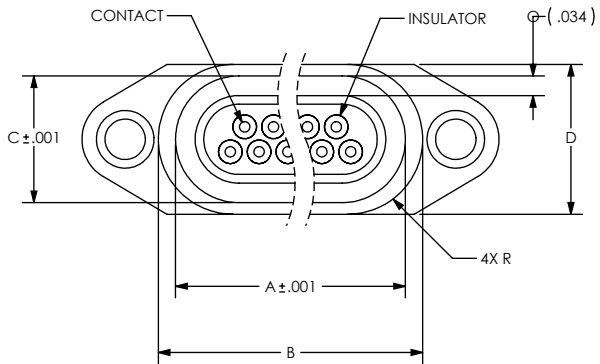
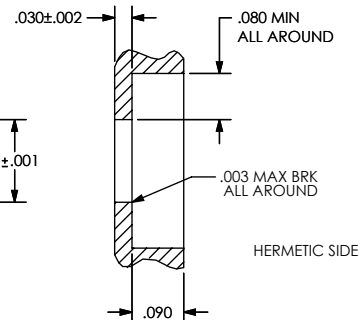


VIEW A

PIN END STYLE:
A-STRAIGHT CUT OR LAPPED
B-STEPPED
C-WIREBOND FLATS
(SOLDERCUP SRIC101-1 AVAILABLE FOR WIRE ATTACH TO STRAIGHT CUT END CONFIGURATION.)



HOLE DETAIL



NUMBER OF CONTACTS	A	B	C	D	X	Y
9	0.390	0.450	0.220	0.260	0.393	0.223
15	0.540	0.600	0.220	0.260	0.543	0.223
21	0.690	0.750	0.220	0.260	0.693	0.223
25	0.790	0.850	0.220	0.260	0.793	0.223
31	0.940	1.000	0.220	0.260	0.943	0.223
37	1.090	1.150	0.220	0.260	1.093	0.223
51	1.040	1.143	0.263	0.303	1.043	0.266
100	1.605	1.665	0.337	0.377	1.608	0.340

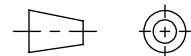
UNLESS OTHERWISE SPECIFIED
DIMENSIONING IAW ASME Y14.5M-1994
DIMENSIONS APPLY AFTER PROCESSES
DIMENSIONS IAW US CUSTOMARY UNITS
X ±.1, .XX ±.01, .XXX ±.005, ∠ ±.5°
.010 MAX OUTSIDE R, .005 MAX INSIDE R
125 RMS SURFACE FINISH



(321) 254-4067
WWW.SRIHERMETICS.COM

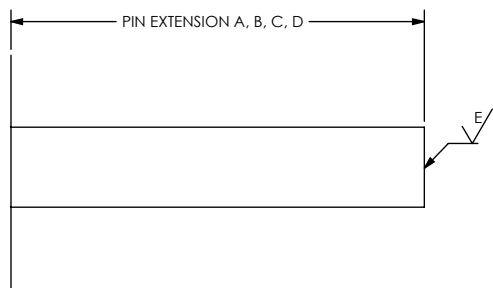
TITLE
CONNECTOR, MICRO-D, REAR MOUNT, SST-COMPATIBLE

THIRD ANGLE PROJECTION



SIZE A	DOCUMENT SRIMD1001	REV C
SCALE 3:1	CAGE CODE 3PJY7	SHEET 2 OF 3

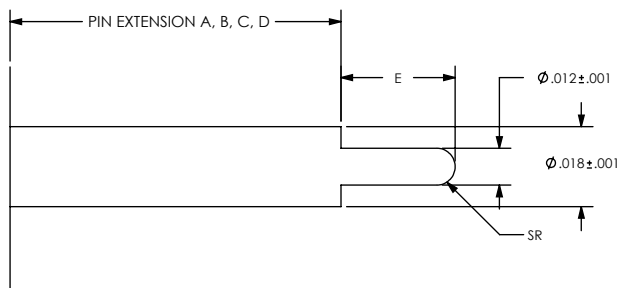
STRAIGHT PIN END STYLE, A



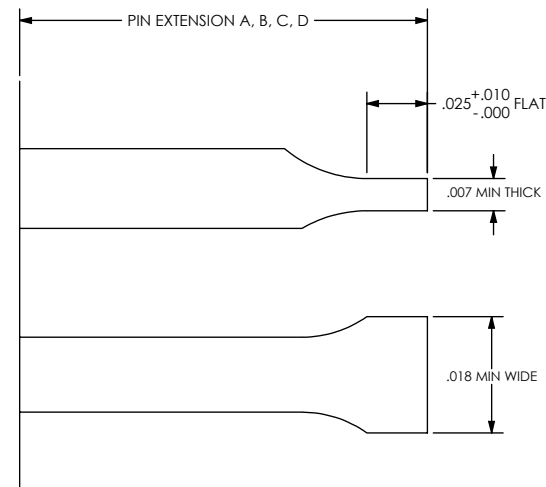
"E" FOR FINISH ONLY IF BEING LAPPED.


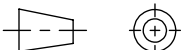
PART NUMBER	A	B	C	D	E
SRIMD1001 - X - A 1	.123	.123	.123	.123	-
SRIMD1001 - X - A 2	.010	.010	.010	.010	16

STEPPED PIN END STYLE, B



WIREBOND FLAT PIN END STYLE, C



UNLESS OTHERWISE SPECIFIED DIMENSIONING IAW ASME Y14.5M-1994 DIMENSIONS APPLY AFTER PROCESSES DIMENSIONS IAW US CUSTOMARY UNITS .X ± .1, .XX ± .01, .XXX ± .005, $\angle \pm .5^\circ$.010 MAX OUTSIDE R, .005 MAX INSIDE R 125 RMS SURFACE FINISH		 (321) 254-4067 WWW.SRIHERMETICS.COM	
THIRD ANGLE PROJECTION 		TITLE CONNECTOR, MICRO-D, REAR MOUNT, SST-COMPATIBLE	
SIZE A	DOCUMENT SRIMD1001	REV C	
SCALE 3:1	CAGE CODE 3PJY7	SHEET 3 OF 3	