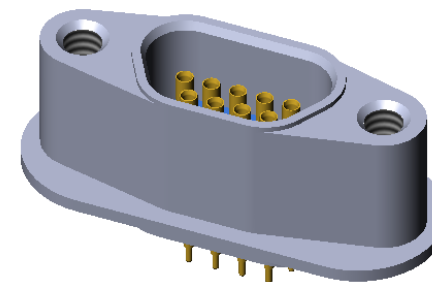
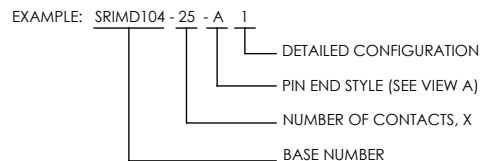



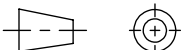
STAINLESS STEEL COMPATIBLE LASER WELDABLE MICRO-D CONNECTOR

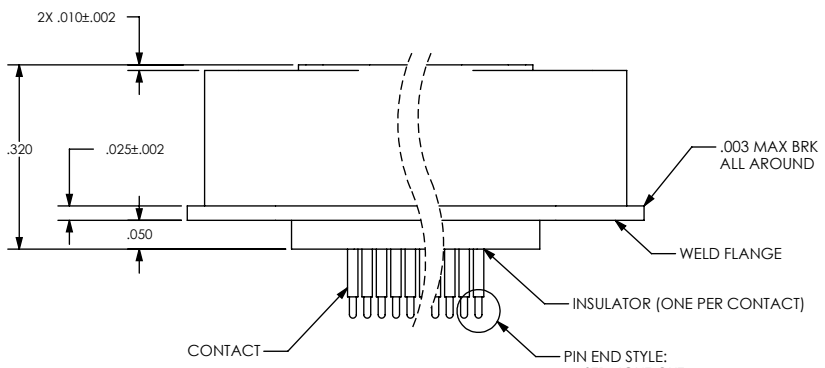
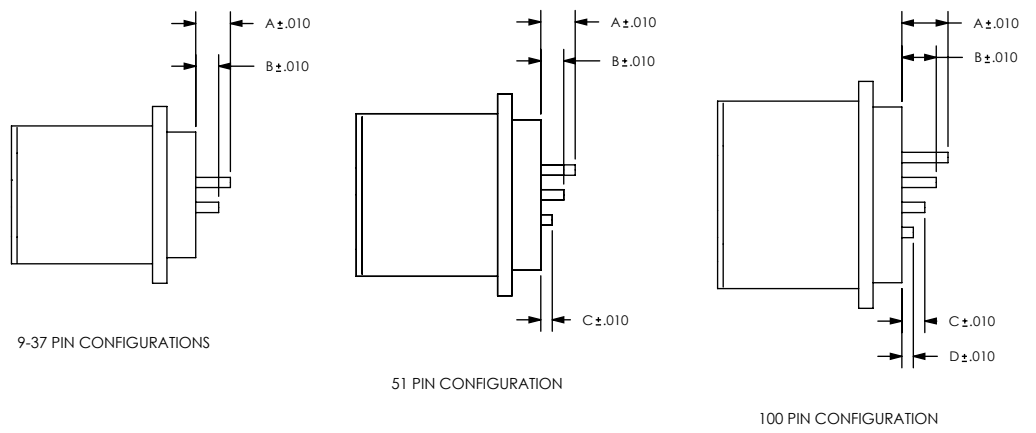
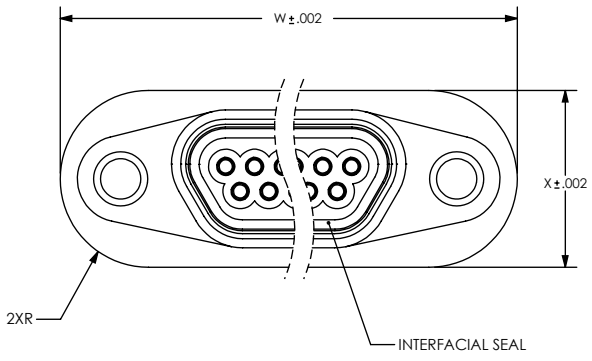
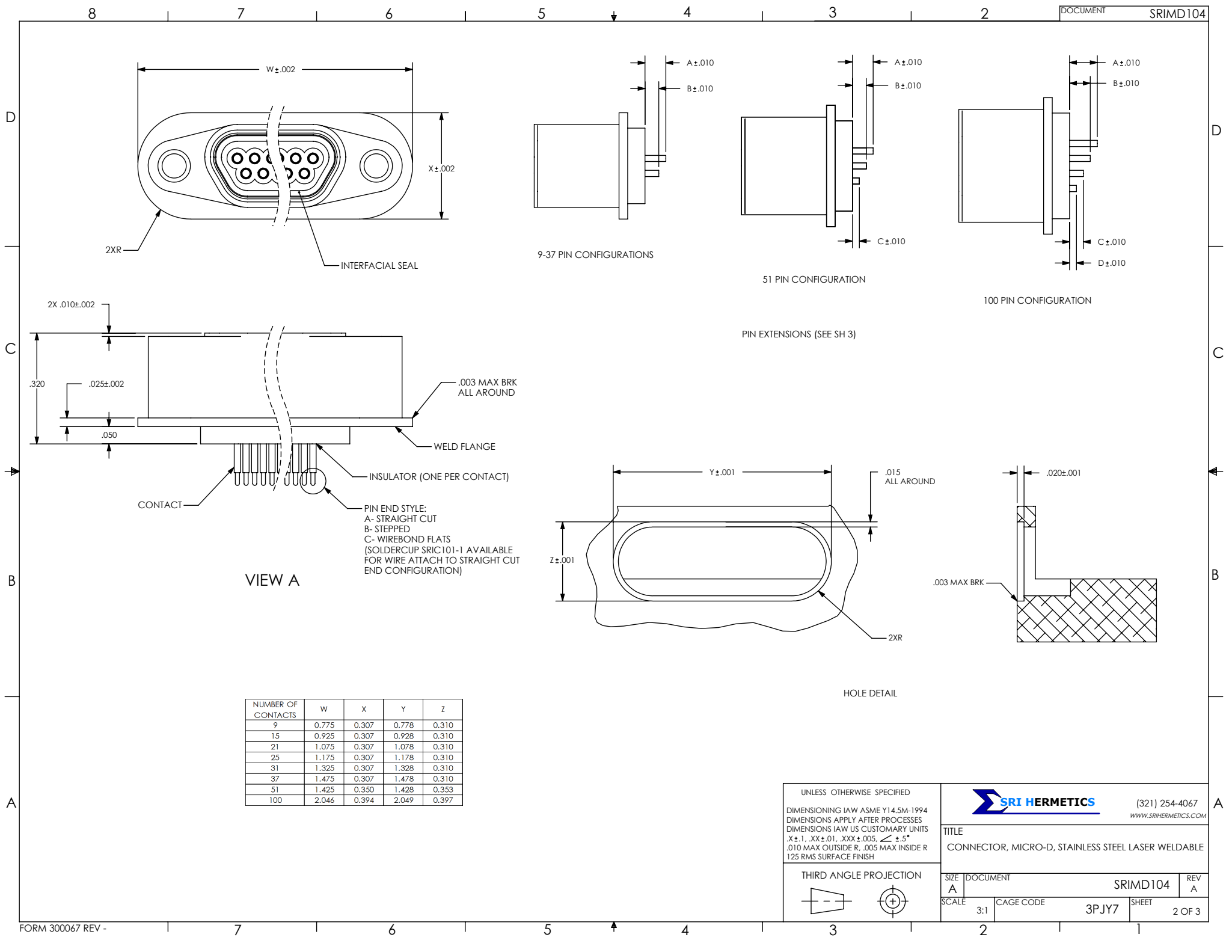
REVISIONS			
REV	CHANGE NO.	DATE	APPROVED
-	INIT RLSE	7/14/2009	J. PETRI
A	DCN000609	1/22/2010	J. PETRI

- TRADITIONAL CONFIGURATION WITH THE FLANGE LOCATED AT THE MIDSECTION OF THE CONNECTOR
- DESIGNED TO LASER WELD INTO AN ELECTRONIC CHASSIS WALL
- CONFORMS TO MIL-DTL-83513 AND ARE AVAILABLE IN 9, 15, 21, 25, 31, 37, 51, AND 100 COUNT PIN/SOCKET CONFIGURATIONS.
- INCORPORATES BERYLLIUM-COPPER PIN/SOCKETS INDIVIDUALLY SEALED USING CERAMAX® PROPRIETARY CERAMIC TO ESTABLISH A DURABLE HERMETIC SEAL.
- THE INTERNAL PINS CAN BE CONFIGURED TO ACCEPT INSULATED WIRE, AUTOMATIC WIRE BONDS, RIBBON WELDS, OR SOLDER CONNECTIONS.

1. LEAK RATE: LESS THAN OR EQUAL TO 1X10E-9 CC/SEC He AT ONE ATMOSPHERE DIFFERENTIAL PRESSURE.
2. INTERFACE AND MOUNTING HOLES IN ACCORDANCE WITH MIL-PRF-83513/2.
3. MATERIALS:
 CONTACT: BERYLLIUM-COPPER ALLOY 172/173 IN ACCORDANCE WITH ASTM B196/197.
 INSULATOR: CERAMAX PROPRIETARY CERAMIC.
 SHELL: STAINLESS STEEL ALLOY 304L, IN ACCORDANCE WITH AMS-QQ-S-763.
 INTERFACIAL SEAL: FLUOROSILICONE RUBBER PER MIL-R-25988, CLASS 1, TYPE II, GRADE 60.
4. FINISH:
 CONTACTS: NICKEL PLATE PER QQ-N-290, .000100 / .000250 THICK.
 GOLD PLATE PER ASTM B488-01, TYPE III, CODE A, .000050 / .000100 THICK.
 PLATING IN SOCKETS NOT REQUIRED BENEATH BLEED HOLE.
5. ORDERING INSTRUCTIONS:
 SPECIFY BASE NUMBER FOLLOWED BY DASH NUMBERS INDICATING PIN COUNT AND PIN CONFIGURATION:

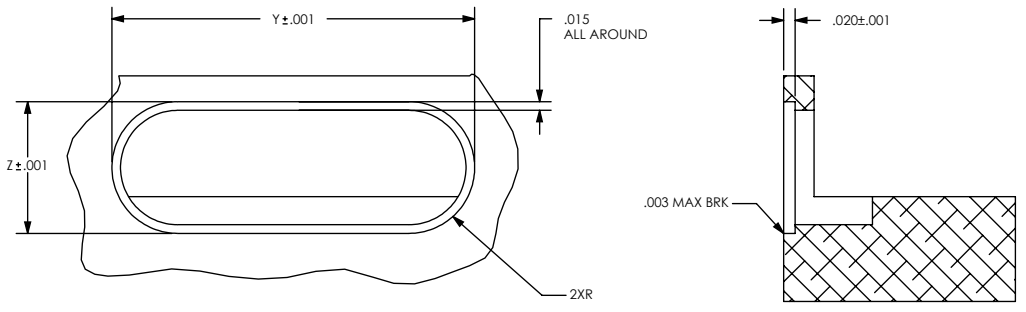


UNLESS OTHERWISE SPECIFIED DIMENSIONING IAW ASME Y14.5M-1994 DIMENSIONS APPLY AFTER PROCESSES DIMENSIONS IAW US CUSTOMARY UNITS .X ± .1, .XX ± .01, .XXX ± .005, ∠ ± .5° .010 MAX OUTSIDE R, .005 MAX INSIDE R 125 RMS SURFACE FINISH		 (321) 254-4067 WWW.SRIHERMETICS.COM	
THIRD ANGLE PROJECTION 		TITLE CONNECTOR, MICRO-D, STAINLESS STEEL LASER WELDABLE	
SIZE A	DOCUMENT SRIMD104	REV A	
SCALE 3:1	CAGE CODE 3PJY7	SHEET 1 OF 3	



VIEW A

PIN END STYLE:
 A- STRAIGHT CUT
 B- STEPPED
 C- WIREBOND FLATS
 (SOLDERCUP SRIC101-1 AVAILABLE
 FOR WIRE ATTACH TO STRAIGHT CUT
 END CONFIGURATION)



HOLE DETAIL

NUMBER OF CONTACTS	w	x	y	z
9	0.775	0.307	0.778	0.310
15	0.925	0.307	0.928	0.310
21	1.075	0.307	1.078	0.310
25	1.175	0.307	1.178	0.310
31	1.325	0.307	1.328	0.310
37	1.475	0.307	1.478	0.310
51	1.425	0.350	1.428	0.353
100	2.046	0.394	2.049	0.397

UNLESS OTHERWISE SPECIFIED
 DIMENSIONING IAW ASME Y14.5M-1994
 DIMENSIONS APPLY AFTER PROCESSES
 DIMENSIONS IAW US CUSTOMARY UNITS
 .X ±.1, .XX ±.01, .XXX ±.005, ∠ ±.5°
 .010 MAX OUTSIDE R, .005 MAX INSIDE R
 125 RMS SURFACE FINISH

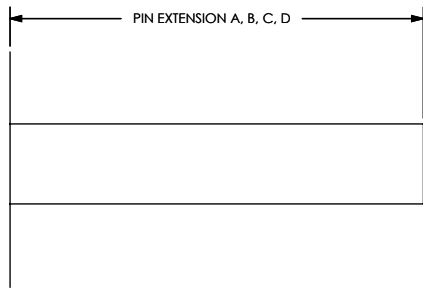
SRI HERMETICS (321) 254-4067
 WWW.SRIHERMETICS.COM

TITLE
 CONNECTOR, MICRO-D, STAINLESS STEEL LASER WELDABLE

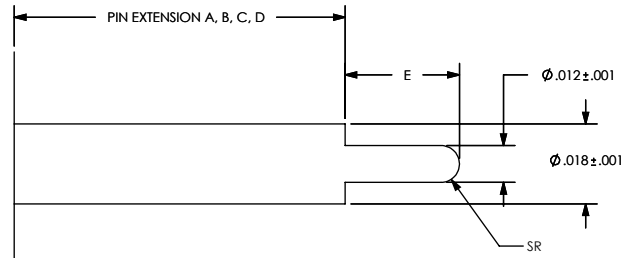
THIRD ANGLE PROJECTION

SIZE A	DOCUMENT SRIMD104	REV A
SCALE 3:1	CAGE CODE 3PJY7	SHEET 2 OF 3

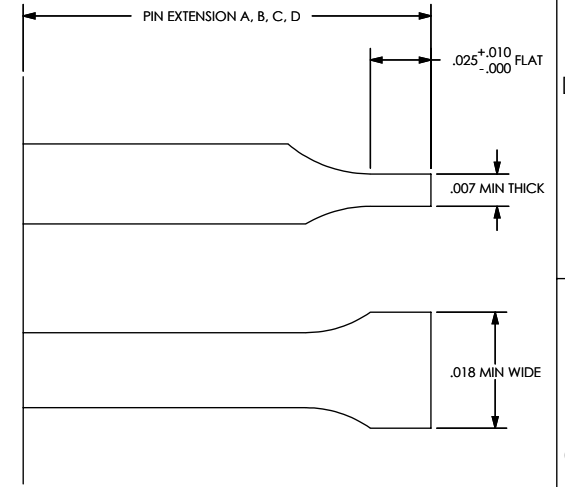
STRAIGHT PIN END STYLE, A



STEPPED PIN END STYLE, B



WIREBOND FLAT PIN END STYLE, C



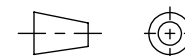
PART NUMBER	A	B	C	D
SRIMD104 - X - A 1	0.040	0.040	0.040	0.040
SRIMD104 - X - A 2	0.075	0.075	0.075	0.075
SRIMD104 - X - A 3	0.118	0.118	0.118	0.118
SRIMD104 - X - A 4	0.200	0.200	0.200	0.200
SRIMD104 - X - A 5	0.180	0.180	0.180	0.180
SRIMD104 - X - A 6	0.155	0.155	0.155	0.155
SRIMD104 - X - A 7	0.105	0.105	0.105	0.105

PART NUMBER	A	B	C	D	E
SRIMD104 - X - B 1	0.083	0.083	0.083	0.083	0.037
SRIMD104 - X - B 2	0.080	0.080	0.080	0.080	0.060
SRIMD104 - X - B 3	0.210	0.210	0.210	0.210	0.060
SRIMD104 - X - B 4	0.120	0.120	0.120	0.120	0.037

PART NUMBER	A	B	C	D
SRIMD104 - X - C 1	0.110	0.075	-	-
SRIMD104 - X - C 2	0.110	0.060	-	-
SRIMD104 - X - C 3	0.110	0.050	-	-
SRIMD104 - X - C 4	0.100	0.160	-	-
SRIMD104 - X - C 5	0.050	0.110	-	-
SRIMD104 - X - C 6	0.110	0.090	-	-
SRIMD1014 - X - C 7	0.080	0.050	-	-

UNLESS OTHERWISE SPECIFIED
 DIMENSIONING IAW ASME Y14.5M-1994
 DIMENSIONS APPLY AFTER PROCESSES
 DIMENSIONS IAW US CUSTOMARY UNITS
 .X ± .1, .XX ± .01, .XXX ± .005, ∠ ± .5°
 .010 MAX OUTSIDE R, .005 MAX INSIDE R
 125 RMS SURFACE FINISH

THIRD ANGLE PROJECTION



(321) 254-4067
 WWW.SRIHERMETICS.COM

TITLE
 CONNECTOR, MICRO-D, STAINLESS STEEL LASER WELDABLE

SIZE A	DOCUMENT SRIMD104	REV A
SCALE 3:1	CAGE CODE 3PJY7	SHEET 3 OF 3