

STEEL COMPATIBLE LASER WELDABLE MICRO-D, MALE/FEMALE CONNECTOR

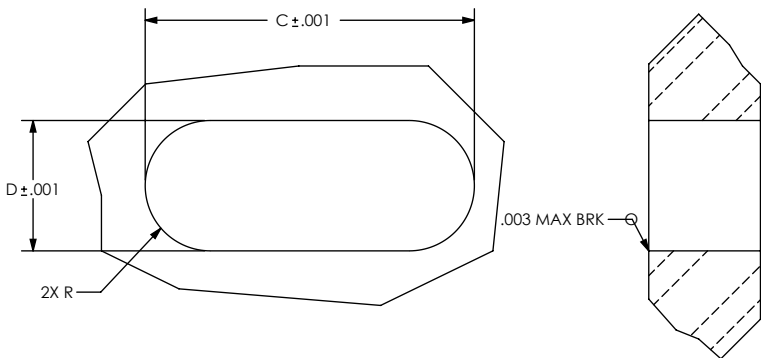
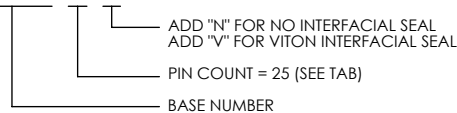
REVISIONS			
REV	DCN	REV DATE	RELEASE APPROVAL
-	INIT RLSE	5/16/2011	J. PETRI

- DESIGNED TO LASER WELD TO AN ELECTRONIC CHASSIS WALL OR FLANGE.
- CONFORMS TO MIL-DTL-83513 AND IS AVAILABLE IN 9, 15, 21, 25, 31, 37, 51, AND 100 COUNT SOCKET CONFIGURATIONS.
- INCORPORATES BERYLLIUM-COPPER SOCKETS INDIVIDUALLY SEALED USING CERAMAX® PROPRIETARY CERAMIC TO ESTABLISH A DURABLE HERMETIC SEAL.

- LEAK RATE: LESS THAN OR EQUAL TO 1×10^{-9} CC/SEC He AT ONE ATMOSPHERE DIFFERENTIAL PRESSURE.
- INTERFACE AND MOUNTING HOLES IN ACCORDANCE WITH MIL-DTL-83513/2.
- MATERIALS:
 CONTACT: BERYLLIUM-COPPER ALLOY 172/173 IN ACCORDANCE WITH ASTM B196/197.
 DIELECTRIC: CERAMAX PROPRIETARY CERAMIC.
 WELD FLANGE: 304L STAINLESS STEEL.
 INTERFACIAL SEAL: FLUOROSILICONE RUBBER PER MIL-R-25988, CLASS 1, TYPE II.
 INSULATOR: POLYETHERETHERKETONE (PEEK)
- FINISH:
 CONTACTS: NICKEL PLATE PER SAE-AMS-QQ-N-290, .000100/.000250 THICK.
 GOLD PLATE PER ASTM B488-01, TYPE III, CODE A, .000075/.000125 THICK.

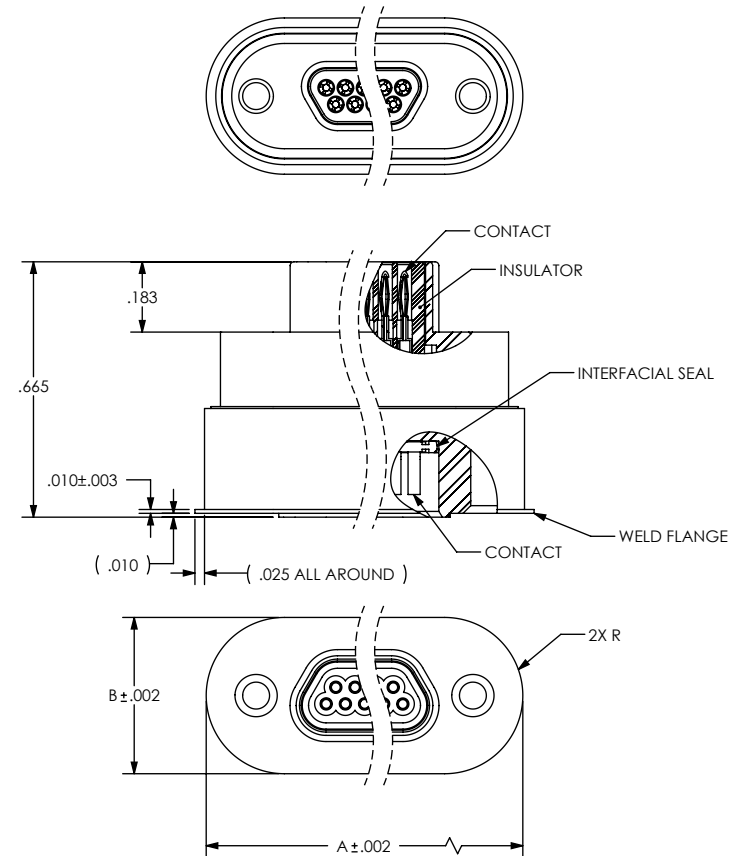
5. ORDERING INSTRUCTIONS:
 SPECIFY BASE NUMBER FOLLOWED BY DASH NUMBER INDICATING PIN COUNT:

EXAMPLE: SRIMD5007 - 25 - V

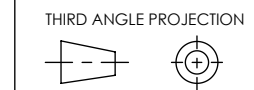


SUGGESTED HOLE DETAIL
 NOT TO SCALE

PART NUMBER	A	B	C	D
SRIMD5007-9	.825	.407	.778	.360
SRIMD5007-15	.975	.407	.928	.360
SRIMD5007-21	1.125	.407	1.078	.360
SRIMD5007-25	1.225	.407	1.178	.360
SRIMD5007-31	1.375	.407	1.328	.360
SRIMD5007-37	1.825	.407	1.478	.360
SRIMD5007-51	1.475	.450	1.428	.403
SRIMD5007-100	2.096	.494	2.049	.447



UNLESS OTHERWISE SPECIFIED
 DIMENSIONING IAW ASME Y14.5M-1994
 DIMENSIONS APPLY AFTER PROCESSES
 DIMENSIONS IAW US CUSTOMARY UNITS
 .X ± .1, .XX ± .01, .XXX ± .005, ∠ ± .5°
 .010 MAX OUTSIDE R, .005 MAX INSIDE R
 125 RMS SURFACE FINISH



SRI HERMETICS (321) 254-4067
 WWW.SRIHERMETICS.COM

TITLE: CONNECTOR, MICRO-D, MALE/FEMALE, SC LBW

SIZE: A DOCUMENT SRIMD5007 REV: -
 SCALE: 2:1 CAGE CODE 3PJY7 SHEET 1 OF 1