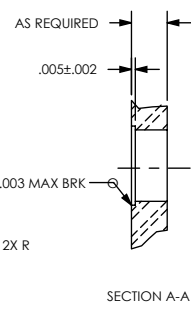
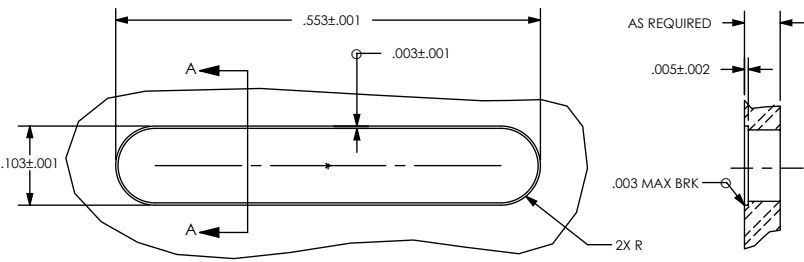
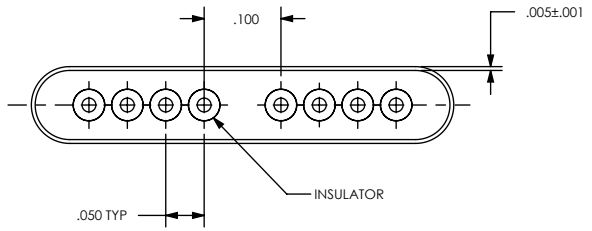
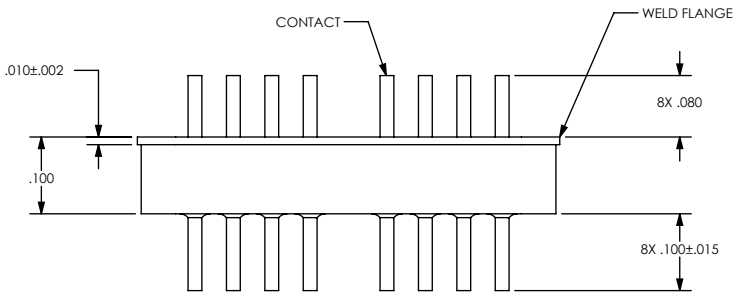
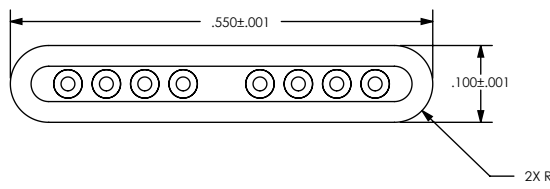


STEEL COMPATIBLE LASER WELDABLE 8-PIN HEADER

- CONFIGURATION WITH THE WELD LIP LOCATED AT THE TOP OF THE CONNECTOR
- DESIGNED TO LASER WELD INTO AN ELECTRONIC CHASSIS WALL
- INCORPORATES BERYLLIUM-COPPER CONTACTS INDIVIDUALLY SEALED USING CERAMAX® PROPRIETARY CERAMIC TO ESTABLISH A DURABLE HERMETIC SEAL.

REVISIONS			
REV	DCN	REV DATE	RELEASE APPROVAL
-	INIT RLSE		

- HERMETIC LEAK RATE: LESS THAN OR EQUAL TO 1×10^{-9} CC/SEC He AT ONE ATMOSPHERE DIFFERENTIAL PRESSURE.
- INSULATION RESISTANCE: GREATER THAN 5,000 MEGOHMS AT $500 \pm 10\%$ VDC AT 25°C IN ACCORDANCE WITH EIA-364-21.
- DIELECTRIC WITHSTANDING VOLTAGE: NO EVIDENCE OF BREAKDOWN OR FLASHOVER AT 600 VAC RMS (60Hz) IN ACCORDANCE WITH EIA-364-20. DURATION OF APPLICATION SHALL BE 1 SECOND MINIMUM.
- MATERIALS:
 CONTACT: BERYLLIUM-COPPER ALLOY 172/173 IN ACCORDANCE WITH ASTM B196/197.
 INSULATOR: CERAMAX PROPRIETARY CERAMIC.
 WELD FLANGE: 304L STAINLESS STEEL IN ACCORDANCE WITH QQ-S-763.
- FINISH:
 CONTACTS: NICKEL PLATE PER QQ-N-290, CLASS 1, .000100 / .000250 THICK.
 GOLD PLATE PER ASTM B488-01, TYPE III, CODE A, .000050 / .000100 THICK.
 PLATE ENTIRE EXPOSED PIN, BOTH ENDS.
- ORDERING INSTRUCTIONS:
 SPECIFY PART NUMBER SRIMP106 - 1



SUGGESTED HOLE DETAIL

UNLESS OTHERWISE SPECIFIED
 DIMENSIONING IAW ASME Y14.5M-1994
 DIMENSIONS APPLY AFTER PROCESSES
 DIMENSIONS IAW US CUSTOMARY UNITS
 .X ± .1, .XX ± .01, .XXX ± .005, ∠ ± .5°
 .010 MAX OUTSIDE R, .005 MAX INSIDE R
 125 RMS SURFACE FINISH

THIRD ANGLE PROJECTION

		(321) 254-4067	
		WWW.SRIHERMETICS.COM	
TITLE			
HEADER, SC LBW (8 PIN)			
SIZE	DOCUMENT	SRIMP106	REV
A			-
SCALE	CAGE CODE	3PJY7	SHEET
4:1			1 OF 1