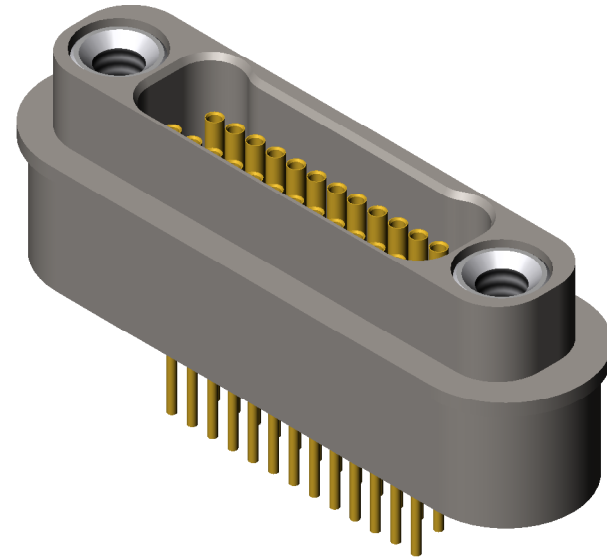
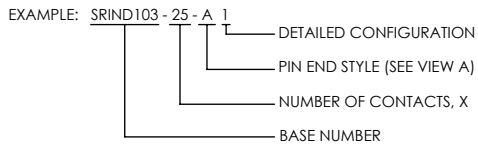



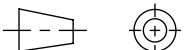
STEEL COMPATIBLE LASER WELDABLE NANO DUAL LOBE CONNECTOR

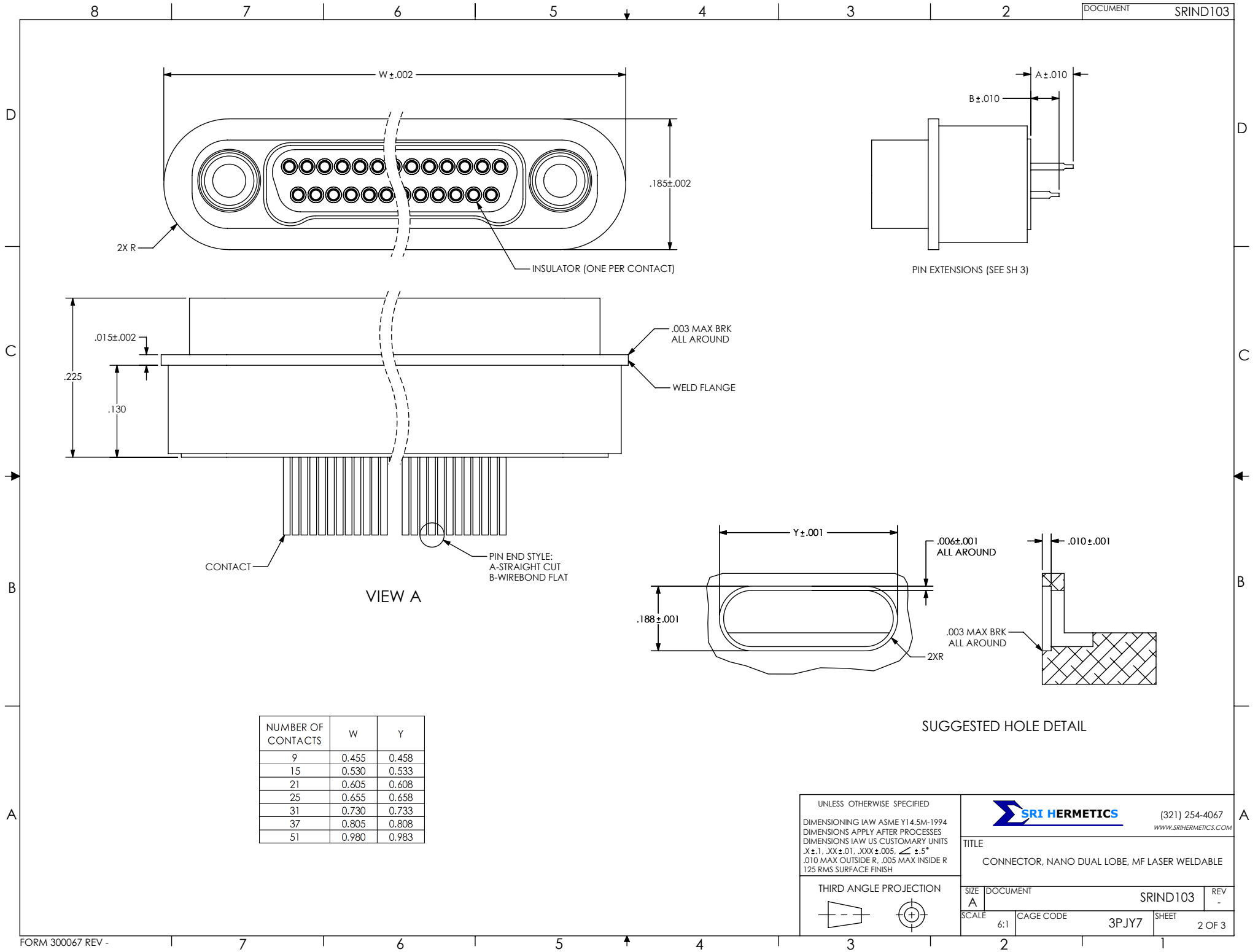
REVISIONS			
REV	CHANGE NO.	DATE	APPROVED
-	INIT RLSE	8/18/2010	J. PETRI

- TRADITIONAL CONFIGURATION WITH THE FLANGE LOCATED AT THE MIDSECTION OF THE CONNECTOR
- DESIGNED TO LASER WELD INTO AN ELECTRONIC CHASSIS WALL
- CONFORMS TO MILDTL-32139 AND ARE AVAILABLE IN 9, 15, 21, 25, 31, 37 AND 51 COUNT PIN/SOCKET CONFIGURATIONS.
- INCORPORATES BERYLLIUM-COPPER PIN/SOCKETS INDIVIDUALLY SEALED USING CERAMAX® PROPRIETARY CERAMIC TO ESTABLISH A DURABLE HERMETIC SEAL.
- THE INTERNAL PINS CAN BE CONFIGURED TO ACCEPT INSULATED WIRE, AUTOMATIC WIRE BONDS, RIBBON WELDS, OR SOLDER CONNECTIONS.

1. LEAK RATE: LESS THAN OR EQUAL TO 1X10E-9 CC/SEC He AT ONE ATMOSPHERE DIFFERENTIAL PRESSURE.
 2. INTERFACE AND MOUNTING HOLES IN ACCORDANCE WITH MIL-DTL-32139/4.
 3. MATERIALS:
CONTACT: BERYLLIUM-COPPER ALLOY 172/173 IN ACCORDANCE WITH ASTM B196/197.
INSULATOR: CERAMAX PROPRIETARY CERAMIC.
WELD FLANGE: STAINLESS STEEL ALLOY 304L IN ACCORDANCE WITH QQ-S-763.
 4. FINISH:
CONTACTS: NICKEL PLATE PER QQ-N-290, .000100/.000250 THICK.
GOLD PLATE PER ASTM B488, TYPE III, CODE A, .000050/.000100 THICK.
PLATE ENTIRE EXPOSED PIN, BOTH ENDS.
PLATING IN SOCKETS NOT REQUIRED BENEATH BLEED HOLE.
- SHELL: PASSIVATED.
5. ORDERING INSTRUCTIONS:
SPECIFY BASE NUMBER FOLLOWED BY DASH NUMBERS INDICATING PIN COUNT AND CONFIGURATION (SEE SHEET 2+):



UNLESS OTHERWISE SPECIFIED		 (321) 254-4067 WWW.SRIHERMETICS.COM	
DIMENSIONING IAW ASME Y14.5M-1994 DIMENSIONS APPLY AFTER PROCESSES DIMENSIONS IAW US CUSTOMARY UNITS .X ±.1, .XX ±.01, .XXX ±.005, ∠ ±.5° .010 MAX OUTSIDE R, .005 MAX INSIDE R 125 RMS SURFACE FINISH		TITLE	
THIRD ANGLE PROJECTION		CONNECTOR, NANO DUAL LOBE, MF LASER WELDABLE	
	SIZE A	DOCUMENT SRIND103	REV -
SCALE 6:1	CAGE CODE 3PJY7	SHEET 1 OF 3	



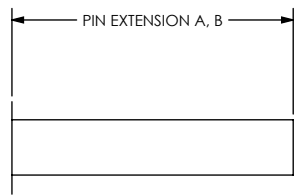
NUMBER OF CONTACTS	W	Y
9	0.455	0.458
15	0.530	0.533
21	0.605	0.608
25	0.655	0.658
31	0.730	0.733
37	0.805	0.808
51	0.980	0.983

UNLESS OTHERWISE SPECIFIED
 DIMENSIONING IAW ASME Y14.5M-1994
 DIMENSIONS APPLY AFTER PROCESSES
 DIMENSIONS IAW US CUSTOMARY UNITS
 .X ± .1, .XX ± .01, .XXX ± .005, ∠ ± .5°
 .010 MAX OUTSIDE R, .005 MAX INSIDE R
 125 RMS SURFACE FINISH

THIRD ANGLE PROJECTION

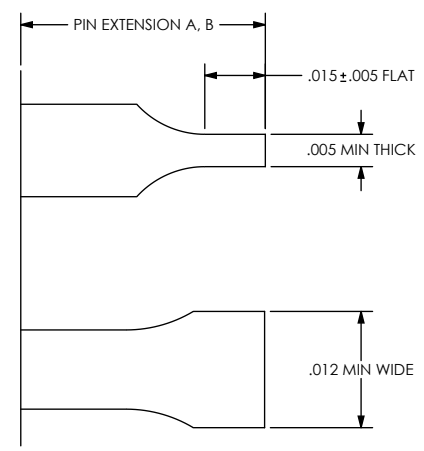
		(321) 254-4067 WWW.SRIHERMETICS.COM	
CONNECTOR, NANO DUAL LOBE, MF LASER WELDABLE		SIZE	DOCUMENT
SCALE		6:1	CAGE CODE
3PJY7		SRIND103	REV -
SHEET		2 OF 3	

STRAIGHT PIN END STYLE, A



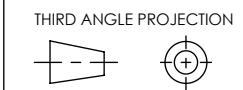
PART NUMBER	A	B
SRIND103 - X - A 1	.110	.110

WIREBOND FLAT PIN END STYLE, B



PART NUMBER	A	B
SRIND103 - X - B 1	.060	.040

UNLESS OTHERWISE SPECIFIED
 DIMENSIONING IAW ASME Y14.5M-1994
 DIMENSIONS APPLY AFTER PROCESSES
 DIMENSIONS IAW US CUSTOMARY UNITS
 .X ± .1, .XX ± .01, .XXX ± .005, ∠ ± .5°
 .010 MAX OUTSIDE R, .005 MAX INSIDE R
 125 RMS SURFACE FINISH



(321) 254-4067
 WWW.SRIHERMETICS.COM

TITLE
 CONNECTOR, NANO DUAL LOBE, MF LASER WELDABLE

SIZE A	DOCUMENT SRIND103	REV -
SCALE 6:1	CAGE CODE 3PJY7	SHEET 3 OF 3