

ALUMINUM COMPATIBLE LASER WELDABLE NANO DUAL LOBE CONNECTOR

REVISIONS			
REV	CHANGE NO.	DATE	APPROVED
-	INIT RLSE	07-03-12	J. PETRI

- CONFIGURATION WITH THE FLANGE LOCATED AT THE TOP OF THE CONNECTOR
- DESIGNED TO LASER WELD INTO A LOW-PROFILE ELECTRONIC CHASSIS WALL
- CONFORMS TO MIL-DTL-32139 AND ARE AVAILABLE IN 9, 15, 21, 25, 31, 37 AND 51 COUNT PIN/SOCKET CONFIGURATIONS.
- INCORPORATES BERYLLIUM-COPPER PIN/SOCKETS INDIVIDUALLY SEALED USING CERAMAX® PROPRIETARY CERAMIC TO ESTABLISH A DURABLE HERMETIC SEAL.
- THE INTERNAL PINS CAN BE CONFIGURED TO ACCEPT INSULATED WIRE, AUTOMATIC WIRE BONDS, RIBBON WELDS, OR SOLDER CONNECTIONS.

1. LEAK RATE: LESS THAN OR EQUAL TO 1X10E-9 CC/SEC He AT ONE ATMOSPHERE DIFFERENTIAL PRESSURE.

2. INTERFACE AND MOUNTING HOLES IN ACCORDANCE WITH MIL-DTL-32139/4.

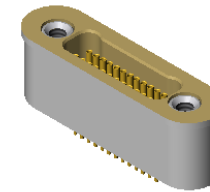
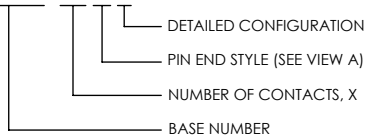
3. MATERIALS:
 CONTACT: BERYLLIUM-COPPER ALLOY 172/173 IN ACCORDANCE WITH ASTM B196/197.
 INSULATOR: CERAMAX PROPRIETARY CERAMIC.
 WELD FLANGE: ALUMINUM ALLOY 4032 IN ACCORDANCE WITH ASTM B247.

4. FINISH:
 CONTACTS: NICKEL PLATE PER QQ-N-290, .000100 / .000250 THICK.
 GOLD PLATE PER ASTM B488-01, TYPE III, CODE A, .000050/.000100 THICK.
 PLATE ENTIRE EXPOSED PIN, BOTH ENDS.
 PLATING IN SOCKETS NOT REQUIRED BENEATH BLEED HOLE.

SHELL: CHEMICAL CONVERSION COAT IN ACCORDANCE WITH MIL-C-5541, CLASS 1A.

5. ORDERING INSTRUCTIONS:
 SPECIFY BASE NUMBER FOLLOWED BY DASH NUMBERS INDICATING PIN COUNT AND CONFIGURATION (SEE SHEET 2+):

EXAMPLE: SRIND501 - 25 - A - 1



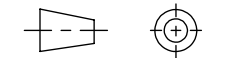
UNLESS OTHERWISE SPECIFIED
 DIMENSIONING IAW ASME Y14.5M-1994
 DIMENSIONS APPLY AFTER PROCESSES
 DIMENSIONS IAW US CUSTOMARY UNITS
 .X ± .1, .XX ± .01, .XXX ± .005, ∠ ± .5°
 .010 MAX OUTSIDE R, .005 MAX INSIDE R
 125 RMS SURFACE FINISH



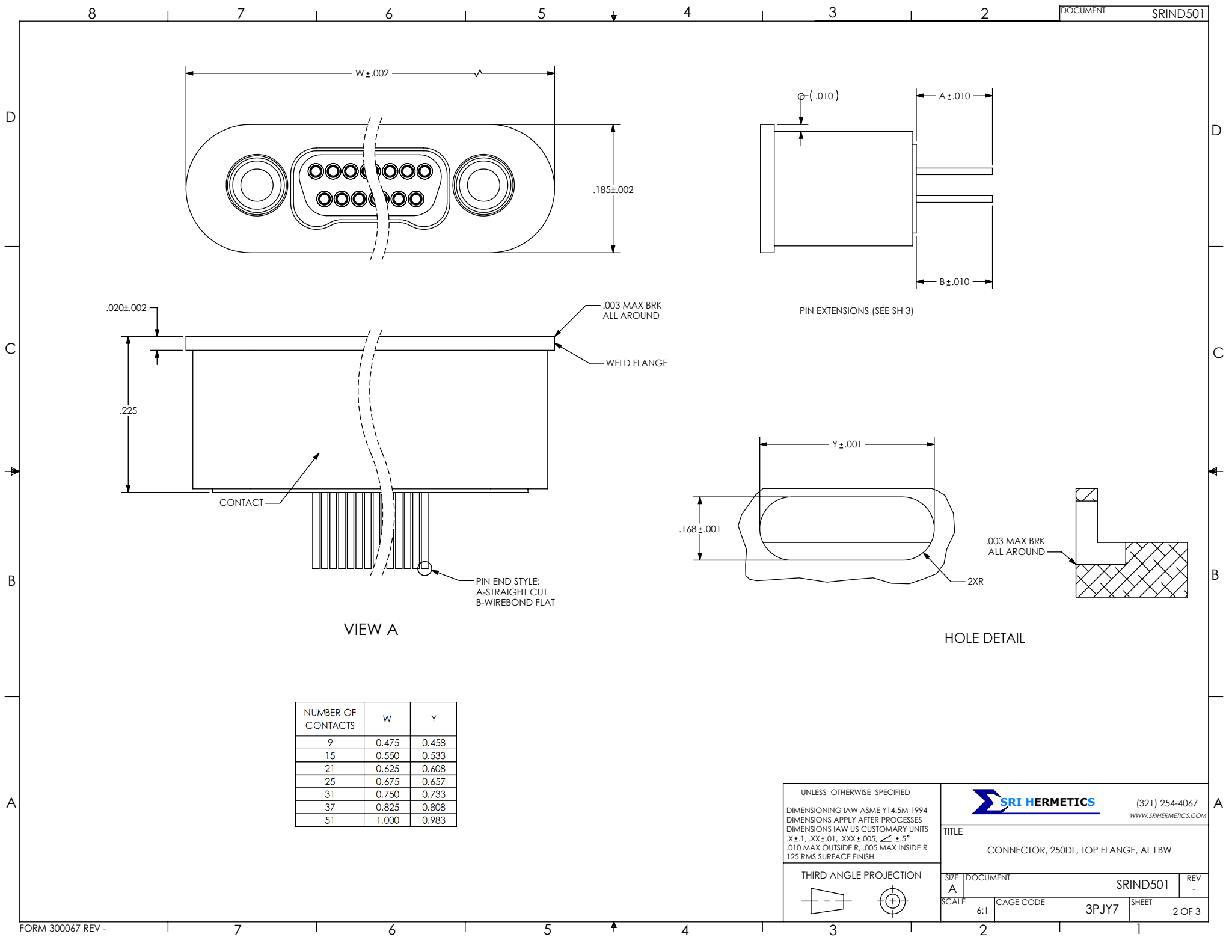
(321) 254-4067
 WWW.SRIHERMETICS.COM

TITLE
 CONNECTOR, 250DL, TOP FLANGE, AL LBW

THIRD ANGLE PROJECTION



SIZE A	DOCUMENT SRIND501	REV -
SCALE 6:1	CAGE CODE 3PJY7	SHEET 1 OF 3



.020±.002

.225

CONTACT

.003 MAX BRK ALL AROUND

WELD FLANGE

PIN END STYLE:
A-STRAIGHT CUT
B-WIREBOND FLAT

VIEW A

NUMBER OF CONTACTS	W	Y
9	0.475	0.458
15	0.550	0.533
21	0.625	0.608
25	0.675	0.657
31	0.750	0.733
37	0.825	0.808
51	1.000	0.983

PIN EXTENSIONS (SEE SH 3)

∅ (.010)

A ± .010

B ± .010

Y ± .001

.168 ± .001

.003 MAX BRK ALL AROUND

2XR

HOLE DETAIL

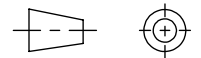
UNLESS OTHERWISE SPECIFIED
DIMENSIONING IAW ASME Y14.5M-1994
DIMENSIONS APPLY AFTER PROCESSES
DIMENSIONS IAW US CUSTOMARY UNITS
.X ± .1, .XX ± .01, .XXX ± .005, ∠ ± .5°
.010 MAX OUTSIDE R, .005 MAX INSIDE R
125 RMS SURFACE FINISH



(321) 254-4067
WWW.SRIHERMETICS.COM

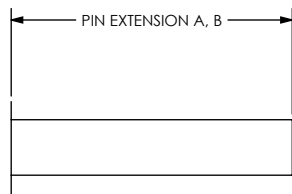
TITLE
CONNECTOR, 250DL, TOP FLANGE, AL LBW

THIRD ANGLE PROJECTION



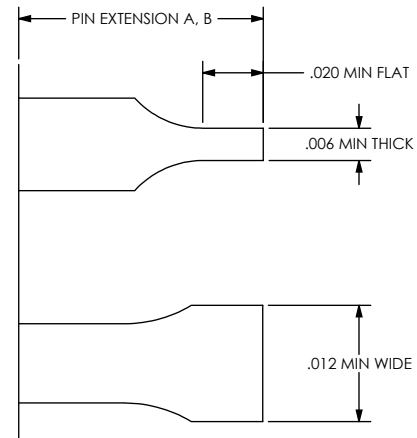
SIZE A	DOCUMENT SRIND501	REV -
SCALE 6:1	CAGE CODE 3PJY7	SHEET 2 OF 3

STRAIGHT PIN END STYLE, A



PART NUMBER	A	B
SRIND501 - X - A 1	.110	.110

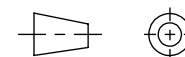
WIREBOND FLAT PIN END STYLE, B



PART NUMBER	A	B
SRIND501 - X - B 1	.060	.040

UNLESS OTHERWISE SPECIFIED
 DIMENSIONING IAW ASME Y14.5M-1994
 DIMENSIONS APPLY AFTER PROCESSES
 DIMENSIONS IAW US CUSTOMARY UNITS
 .X ± .1, .XX ± .01, .XXX ± .005, ∠ ± .5°
 .010 MAX OUTSIDE R, .005 MAX INSIDE R
 125 RMS SURFACE FINISH

THIRD ANGLE PROJECTION



(321) 254-4067
 WWW.SRIHERMETICS.COM

TITLE
 CONNECTOR, 250DL, TOP FLANGE, AL LBW

SIZE A	DOCUMENT SRIND501	REV -
-----------	----------------------	----------

SCALE 6:1	CAGE CODE 3PJY7	SHEET 3 OF 3
--------------	--------------------	-----------------