

REVISIONS			
REV	CHANGE NO.	DATE	CFG APPROVAL
-	INIT RLSE	2008-02-25	J. PETRI

STAINLESS STEEL COMPATIBLE LASER WELDABLE DOUBLE-ENDED USB CONNECTOR

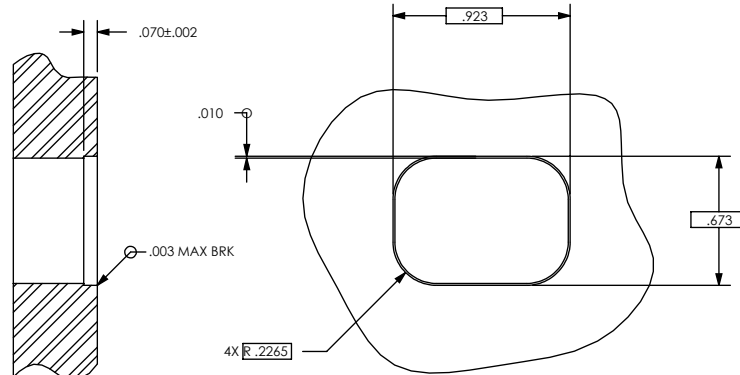
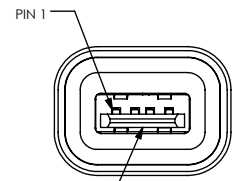
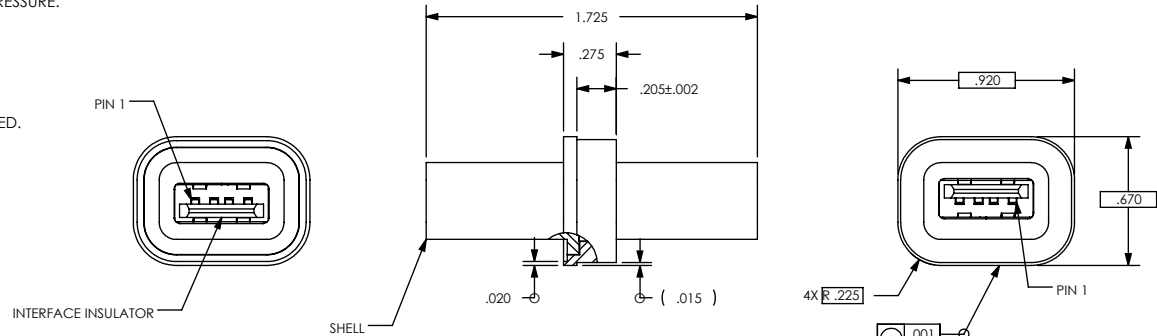
- DOUBLE-ENDED (STANDARD FEMALE RECEPTACLE/STANDARD FEMALE RECEPTACLE) CONFIGURATION WITH THE WELD INTERFACE AT THE MID-SECTION
- DESIGNED TO LASER WELD INTO AN ELECTRONIC CHASSIS WALL OR FLANGE
- INTERFACES CONFORM TO UNIVERSAL SERIAL BUS SPECIFICATION REVISION 2.0, SERIES A RECEPTACLE.
- INCORPORATES BERYLLIUM-COPPER CONTACTS INDIVIDUALLY SEALED USING CERAMAX® PROPRIETARY CERAMIC TO ESTABLISH A DURABLE HERMETIC SEAL.

1. LEAK RATE: LESS THAN OR EQUAL TO 2X10E-10 CC/SEC He AT ONE ATMOSPHERE DIFFERENTIAL PRESSURE. TEST TO 1X10E-9 CC/SEC He AT ONE ATMOSPHERE DIFFERENTIAL PRESSURE.

2. MATERIALS:
 CONTACTS: BERYLLIUM-COPPER ALLOY 172/173 IN ACCORDANCE WITH ASTM B196/197.
 DIELECTRIC: CERAMAX PROPRIETARY CERAMIC.
 SHELL: STAINLESS STEEL ALLOY 304L IN ACCORDANCE WITH SAE AMS-QQ-S-763.
 INTERFACE INSULATOR: 30% GLASS FILLED POLYBUTYLENE TEREPHTHALATE, MINIMUM UL94-V0 RATED.

3. FINISH:
 CONTACTS: NICKEL AND GOLD PLATED.
 SHELL: PASSIVATED.

4. ORDERING INSTRUCTIONS:
 ORDER PART NUMBER SRIUSB101-1



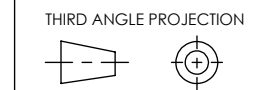
HOLE DETAIL

UNLESS OTHERWISE SPECIFIED
 DIMENSIONING IAW ASME Y14.5M-1994
 DIMENSIONS APPLY AFTER PROCESSES
 DIMENSIONS IAW US CUSTOMARY UNITS
 .X ± .1, .XX ± .01, .XXX ± .005, ∠ ± .5°
 .010 MAX OUTSIDE R, .005 MAX INSIDE R
 125 RMS SURFACE FINISH



(321) 254-4067
 WWW.SRIHERMETICS.COM

TITLE
 CONNECTOR, USB, RCTP/RCPT, SC LBW



SIZE A	DOCUMENT SRIUSB101	REV -
SCALE 1:1	CAGE CODE 3PJY7	SHEET 1 OF 1