

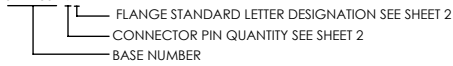
STAINLESS STEEL VACUUM FLANGE W/LASER WELDED DOUBLE-ENDED POWER SUB-D HEADER

REVISIONS			
REV	CHANGE NO.	DATE	CFG APPROVAL
-	INIT RLSE	2/25/2010	J. PETRI

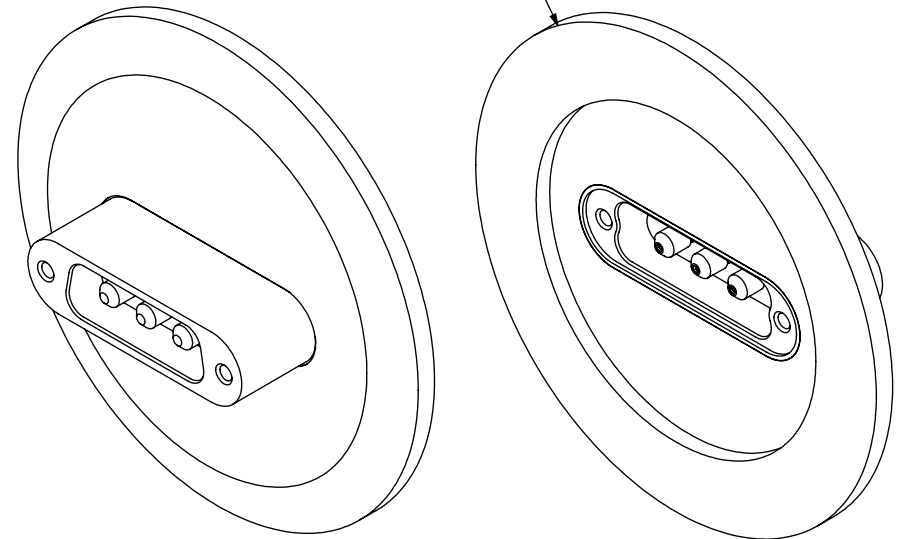
- DOUBLE-ENDED (MALE PLUG/MALE PLUG) CONFIGURATION WITH THE WELD INTERFACE AT THE TOP
- CONFORMS TO MIL-DTL-24308 (Ø .142 POWER CONTACT) AND ARE AVAILABLE IN 3, 5 AND 8 COUNT CONTACT CONFIGURATIONS.
- INCORPORATES BERYLLIUM-COPPER CONTACTS INDIVIDUALLY SEALED USING CERAMAX® PROPRIETARY CERAMIC TO ESTABLISH A DURABLE HERMETIC SEAL.

1. LEAK RATE: LESS THAN OR EQUAL TO 2X10E-10 CC/SEC H₂ AT ONE ATMOSPHERE DIFFERENTIAL PRESSURE. TEST TO 1X10E-9 CC/SEC H₂ AT ONE ATMOSPHERE DIFFERENTIAL PRESSURE.
2. MATERIALS:
 CONTACTS: BERYLLIUM-COPPER ALLOY 172/173 IN ACCORDANCE WITH ASTM B196/197.
 DIELECTRIC: CERAMAX PROPRIETARY CERAMIC.
 SHELL: STAINLESS STEEL ALLOY 304L IN ACCORDANCE WITH SAE AMS-QQ-S-763.
 VACUUM FLANGE: 304L STAINLESS STEEL
3. FINISH:
 CONTACTS: NICKEL PLATE PER QQ-N-290, .000100/.000250 THICK.
 GOLD PLATE PER ASTM B488-01, TYPE II, CODE C, .000050/.000100 THICK.
 SHELL: PASSIVATED PER QQ-P-35.
4. ORDERING INSTRUCTIONS:
 SPECIFY BASE NUMBER FOLLOWED BY DASH NUMBERS INDICATING PIN COUNT AND FLANGE TYPE:

EXAMPLE: SRIVF501-9E



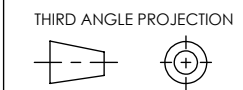
FLANGE SHOWN FOR REFERENCE ONLY
 SEE SHEET 2 FOR FLANGE/CONNECTOR SIZES



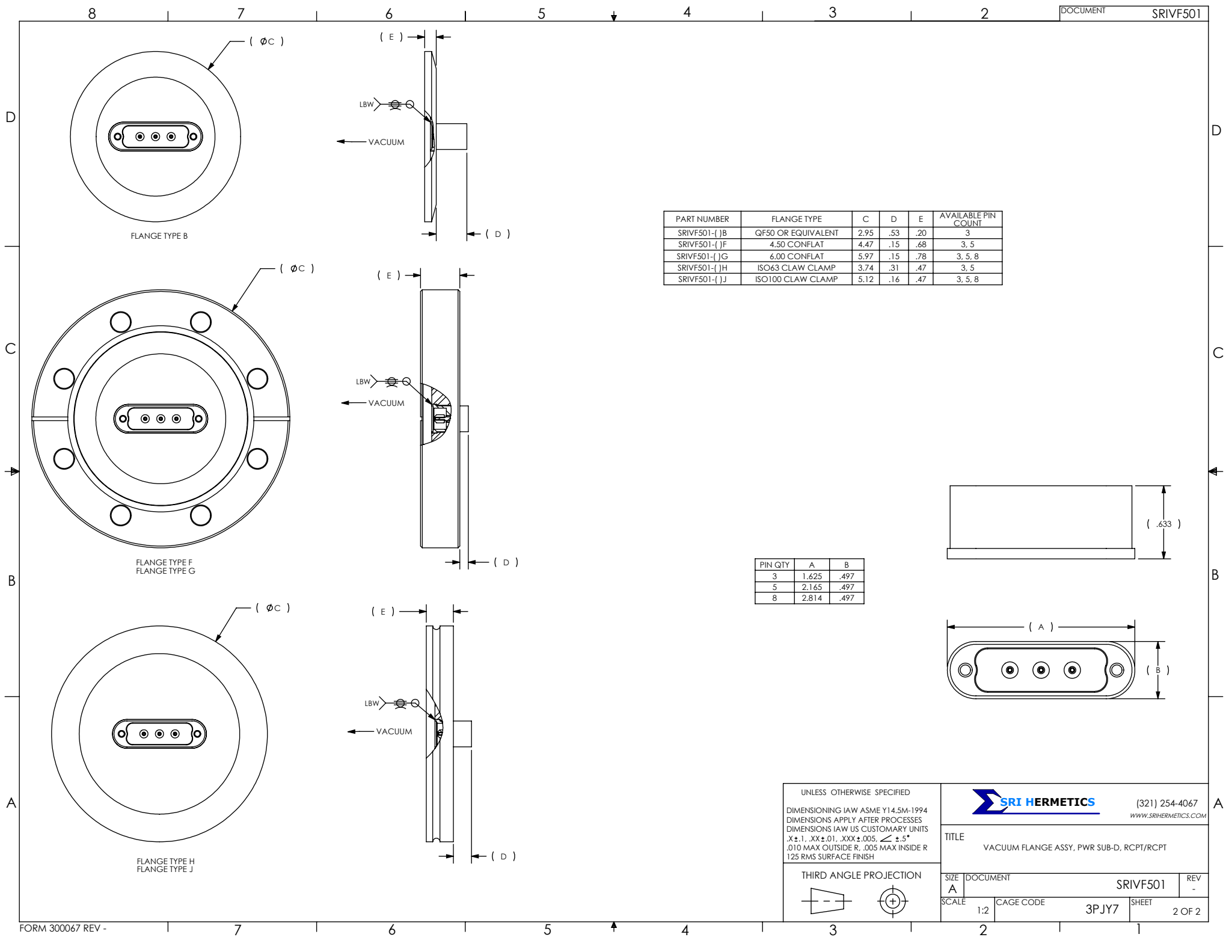
UNLESS OTHERWISE SPECIFIED
 DIMENSIONING IAW ASME Y14.5M-1994
 DIMENSIONS APPLY AFTER PROCESSES
 DIMENSIONS IAW US CUSTOMARY UNITS
 .X ± .1, .XX ± .01, .XXX ± .005, ∠ ± .5°
 .010 MAX OUTSIDE R, .005 MAX INSIDE R
 125 RMS SURFACE FINISH



TITLE
 VACUUM FLANGE ASSY, PWR SUB-D, RCPT/RCPT

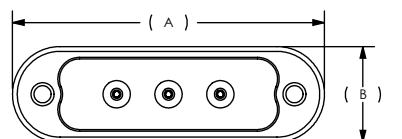
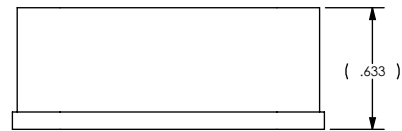


SIZE A	DOCUMENT SRIVF501	REV -
SCALE 1:2	CAGE CODE 3PJY7	SHEET 1 OF 2



PART NUMBER	FLANGE TYPE	C	D	E	AVAILABLE PIN COUNT
SRIVF501-{JB}	QF50 OR EQUIVALENT	2.95	.53	.20	3
SRIVF501-{JF}	4.50 CONFLAT	4.47	.15	.68	3, 5, 8
SRIVF501-{JG}	6.00 CONFLAT	5.97	.15	.78	3, 5, 8
SRIVF501-{JH}	ISO63 CLAW CLAMP	3.74	.31	.47	3, 5
SRIVF501-{JJ}	ISO100 CLAW CLAMP	5.12	.16	.47	3, 5, 8

PIN QTY	A	B
3	1.625	.497
5	2.165	.497
8	2.814	.497



UNLESS OTHERWISE SPECIFIED
 DIMENSIONING IAW ASME Y14.5M-1994
 DIMENSIONS APPLY AFTER PROCESSES
 DIMENSIONS IAW US CUSTOMARY UNITS
 .X ± .1, .XX ± .01, .XXX ± .005, ∠ ± .5°
 .010 MAX OUTSIDE R, .005 MAX INSIDE R
 125 RMS SURFACE FINISH

THIRD ANGLE PROJECTION

SRI HERMETICS (321) 254-4067
 WWW.SRIHERMETICS.COM

TITLE: VACUUM FLANGE ASSY, PWR SUB-D, RCPT/RCPT

SIZE A	DOCUMENT	SRIVF501	REV -
SCALE 1:2	CAGE CODE	3PJY7	SHEET 2 OF 2